

A GREAT STARTER PACK FOR FIRST HOME BUYERS



YOURS FROM AS LITTLE AS \$277 A WEEK ON MORTGAGE REPAYMENTS!!!!

Lot 20 Fitzroy St "Somerfield"

Suburb: Holmview

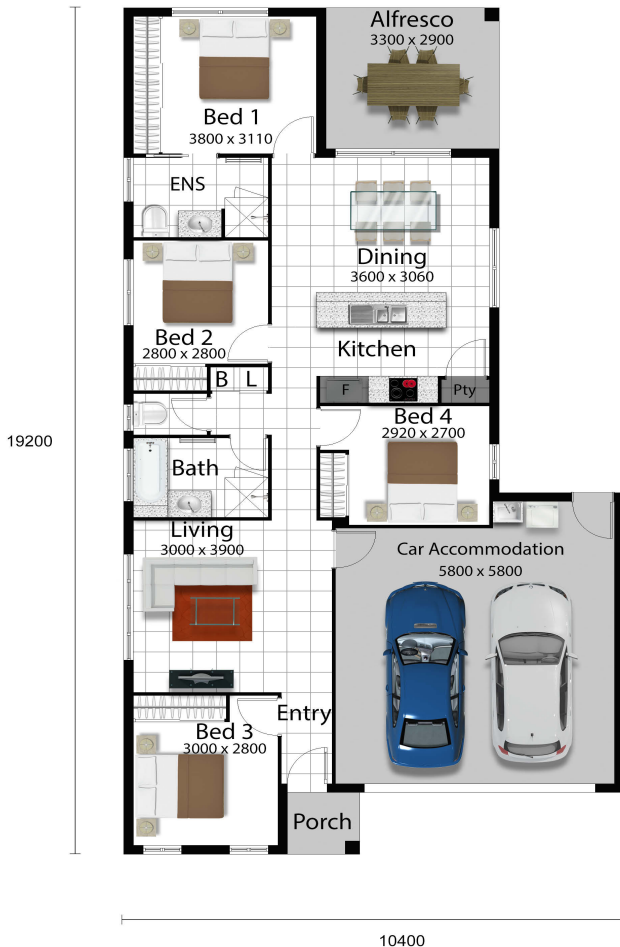
Price: \$235,000

Land Size: 400m²

HOUSE & LAND:

\$428,518

Living area	111.78m ²
Garage Area	39.38m ²
Alfresco Area	11.52m ²
Porch Area	1.80m ²
Total Area	164.48m²



PACKAGE INCLUDES:



- 25 Years structural guarantee*
- Three point Termite protection
- Air-conditioned
- 4 Bedrooms, 2 livings & 2 bathrooms
- Colorbond roof, gutters & fascia's
- Barrier Screens to Sliding glass Door
- Key Locks to windows
- Quality tiles & carpet
- Stone bench Tops to Kitchen
- Flyscreens to window openings
- Quality appliances
- Council Fees
- Hand on rail showers to bathrooms
- Quality tapware throughout
- Double Remote Controlled Garage

- LED lighting
- NBN connection
- Heat Pump
- TV antenna
- Driveway & pathway
- Clothesline
- Rendered letterbox
- Turfing
- Less FHOG \$15,000
- Optional Facades Available
- NO LANDSCAPING INCL**

Lee Roebuck
PH: 0413 057 335

