



Consultant : **DAMIEN GOODALL** : Ph 0411 648 883
 d.goodall@stylemasterhomes.com.au



**LOT 43 Condemine Street
 Sommerfield Estate, Holmview**

WRI 221_S Vogue Facade

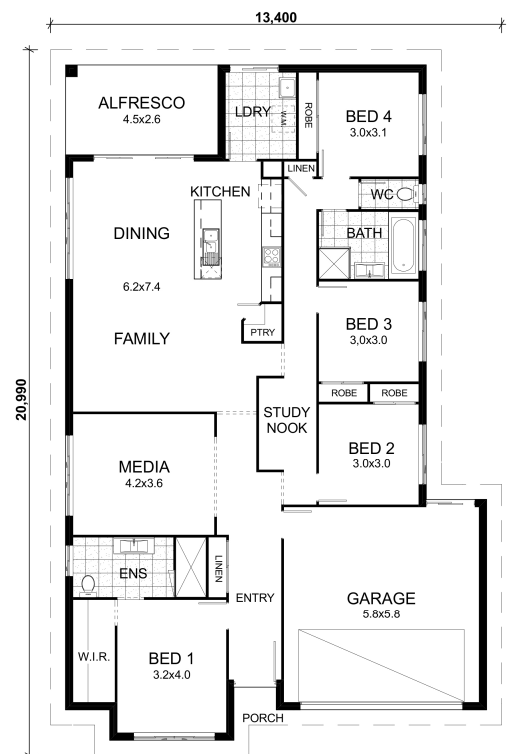
4 2 2 2

\$484,952

LAND: 448m² HOUSE: 221m²

INCLUSIONS:

- Steel frame & Colorbond Roof
- 2.1KW Solar
- 2x Split system aircon units
- Caesarstone Kitchen.
- Blanco Dishwasher
- 1200mm Entry Door
- Floorcoverings - Carpet & tiles
- Slab & tiles to Alfresco
- Exposed aggregate driveway
- Turf to front yard & footpath
- Up to H2 Class slab
- Piering & Earthworks to 1,000m
- Render to front Single Storey.
- Flyscreens & Roller blinds to windows
- Security screens to sliding doors
- Letterbox & clothesline
- LED Light fittings
- NBN ready
- AND MORE**



Prices subject to change. House and land package consists of separate land and house contracts. Images are for illustrative purposes only and may not be to scale. Measurements are approximate only. See tender for details of inclusions. Alliance Homes P/L T/A Stylemaster Homes. QBCC 1025309. ABN 73 103 729 988

Stay Cool **ADD AN INGROUND POOL \$9,500** *Conditions Apply

Walk Right In™

INCLUSIONS



Move Right In Inclusions Pack

A huge range of inclusions, including all those 'extra' jobs you would usually have spent time and money doing yourself after handover!

Interior:

- Carpet (Sapphire range on standard foam underlay)
- Main floor tiles inc. alfresco (Silver Range)
- Split system a/c to both Living and Bed 1
- Flyscreens to windows
- Security screens to sliding doors only (exc. hinged doors)
- Light fittings package
- Window coverings
- NBN pack

Exterior:

- Fixed price site costs (up to H2 soil classification - piercing through 1 metre cut & fill only; no class E sites accepted)
- Driveway, path, porch
- Wintergreen turf (front and footpath)
- Letterbox
- Standard 2.4m x 1.5m clothesline (ground mounted on posts)
- Digital TV antenna

Get The Look

Go on, make a statement about yourself and select from our contemporary facade options for both our single and double storey designs.

- **Single storey designs from page 12**
- **Double storey designs from page 42**

Be the envy of your family and friends by adding street appeal and enhancing the property value to your new home.

Enjoy Exclusive Extras

Even more value with 7 bonus included upgrades

- Steel frame
- Colorbond roof
- 2.0Kv PV solar system
- Render and paint (where applicable)
- Caesarstone kitchen benchtop
- 1200mm wide x 2040mm high hinged front entry door (design specific)
- Alfresco slab with silver range (builders range) tiling

Quick Build Guarantee

From 14 weeks* walk right in to your new home, guaranteed.

Stylemaster takes the stress out of the building process and we do it in style. You'll have the keys to the door almost before you know it so start sending the invitations for that housewarming party!



